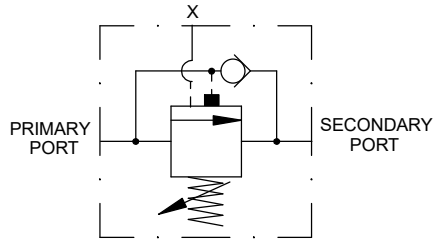
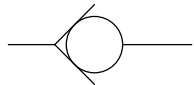


CONTINUATION OF PRESSURE CONTROL VALVES.



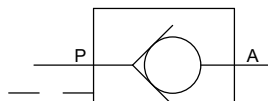
OVERCENTRE VALVE OR BRAKING VALVE.
PORT X = REMOTE PILOT SIGNAL PORT.



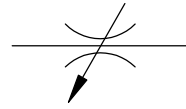
FREE FLOW
CHECK VALVE.



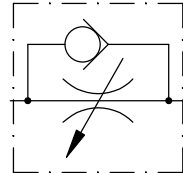
FREE FLOW
CHECK VALVE - SPRING DENOTES A SOME PREDETERMINED PRESSURE.



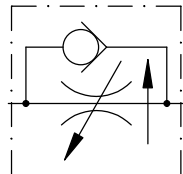
FREE FLOW.
PILOT OPERATED CHECK VALVE,
(OR PILOT OPERATED NON RETURN VALVE)



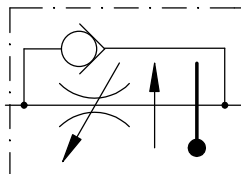
THROTTLE VALVE OR FLOW CONTROL VALVE



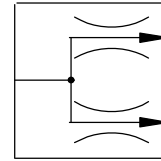
FLOW CONTROL VALVE
CONTROLLED FLOW
FREE FLOW



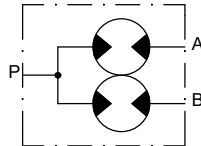
PRESSURE COMPENSATED FLOW CONTROL VALVE.



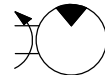
PRESSURE AND TEMPERATURE COMPENSATED FLOW CONTROL VALVE.



FLOW DIVIDER, FLOW DIVISION BASED ON FIXED RATIO AND DEPENDING ON LOAD.



ROTARY FLOW DIVIDER



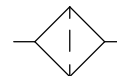
MOTOR - FIXED UNI-DIRECTION



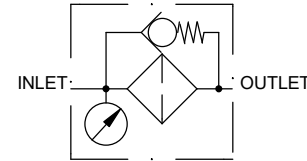
MOTOR - FIXED BI-DIRECTION



MOTOR - VARIABLE BI-DIRECTION



FILTER



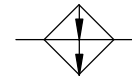
INLET: OUTLET:
FILTER WITH BY-PASS VALVE AND CLOGGING INDICATOR



COOLER



HEATER



TEMPERATURE CONTROL



PRESSURE GAUGE



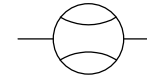
DIFFERENTIAL PRESSURE GAUGE



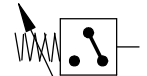
FLUID LEVEL MEASURING DEVICE



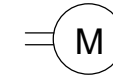
THERMOMETER



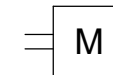
FLOWMETER



PRESSURE SWITCH



ELECTRIC MOTOR



DRIVE UNIT - EXCEPT FOR AN ELECTRIC MOTOR



LINE BELOW FLUID LEVEL IN TANK



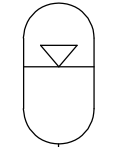
FLEXIBLE LINE, EXAMPLE - HOSE



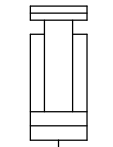
SHUT - OFF VALVE



PLUG



GAS FILLED ACCUMULATOR



DEAD WEIGHT ACCUMULATOR



QUICK COUPLING

Copyright: GarnettCross.com

SYMBOLS. 4