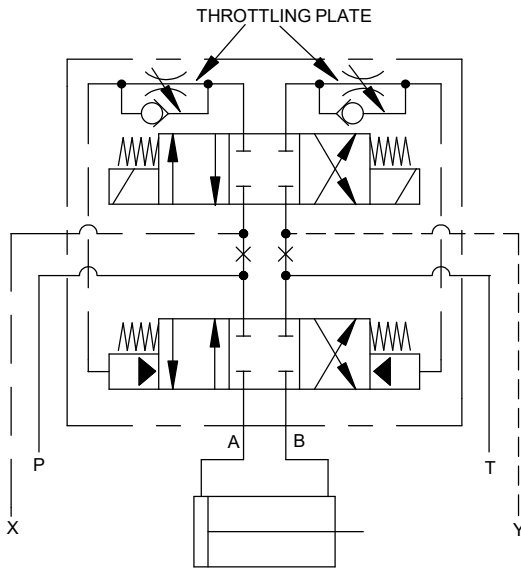
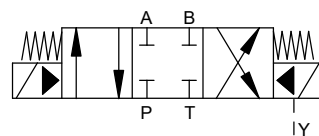


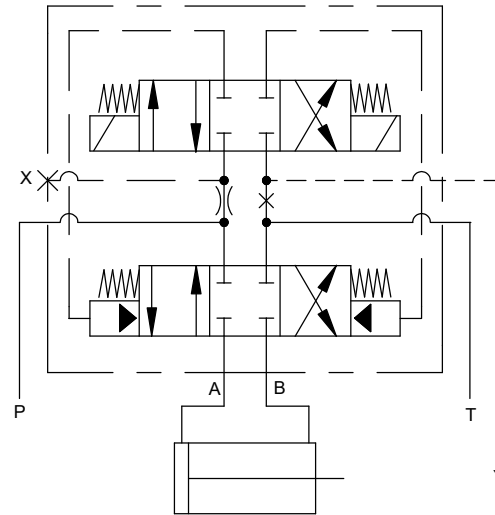
SIMPLIFIED SYMBOL OF
4/3 DIRECTIONAL CONTROL VALVE
(4 PORTS & 3 POSITIONS)
PORTS P, T, A & B CLOSED
(CLOSED CENTRE VALVE)
SOLENOID CONTROLLED
PILOT OPERATED
PORT X = EXTERNAL PILOT PORT
PORT Y = EXTERNAL DRAIN PORT



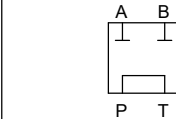
DETAILED SYMBOL OF
4/3 DIRECTIONAL CONTROL VALVE
(4 PORTS & 3 POSITIONS)
PORTS P, T, A & B CLOSED
(CLOSED CENTRE VALVE)
SOLENOID CONTROLLED
PILOT OPERATED
EXTERNALLY PILOTED
EXTERNALLY DRAINED
PORT X = EXTERNAL PILOT PORT
PORT Y = EXTERNAL DRAIN PORT



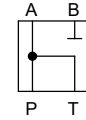
SIMPLIFIED SYMBOL OF
4/3 DIRECTIONAL CONTROL VALVE
(4 PORTS & 3 POSITIONS)
PORTS P, T, A & B CLOSED
(CLOSED CENTRE VALVE)
SOLENOID CONTROLLED
PILOT OPERATED
PORT Y = EXTERNAL DRAIN PORT



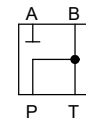
DETAILED SYMBOL OF
4/3 DIRECTIONAL CONTROL VALVE
(4 PORTS & 3 POSITIONS)
PORTS P, T, A & B CLOSED
(CLOSED CENTRE VALVE)
SOLENOID CONTROLLED
PILOT OPERATED
INTERNALLY PILOTED
EXTERNALLY DRAINED
PORT X = PLUGGED
PORT Y = EXTERNAL DRAIN PORT



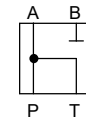
TANDEM CENTRE
VALVE. PORT P OPEN
TO TANK WITH PORTS
A & B CLOSED



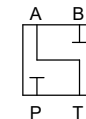
PARTIALLY OPEN
CENTRE. PORT B
CLOSED WITH PORTS
P & A TO TANK



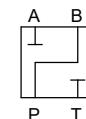
PARTIALLY OPEN
CENTRE. PORT A
CLOSED WITH PORTS
P & B TO TANK.



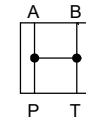
PARTIALLY OPEN
CENTRE. PORT B
CLOSED WITH PORTS
P & A TO TANK



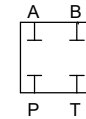
PARTIALLY OPEN
CENTRE. PORT P
& PORT B CLOSED
WITH PORT A TO TANK



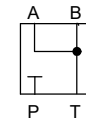
PARTIALLY OPEN
CENTRE. PORT A
& PORT T CLOSED
WITH PORT P TO
PORT B.



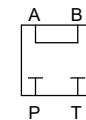
OPEN CENTRE VALVE.
ALL PORTS ARE OPEN
TO EACH OTHER AND
TO TANK.



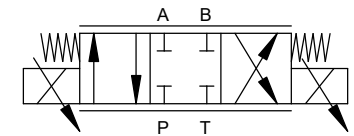
CLOSED CENTRE
VALVE. PORTS P, T,
A & B ARE CLOSED



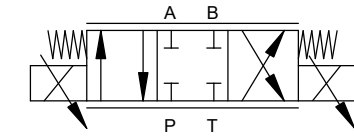
PARTIALLY OPEN
CENTRE. PORT P
CLOSED, PORTS
A, B & T CONNECTED.



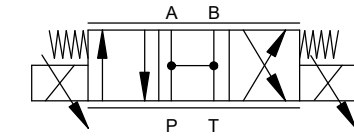
PARTIALLY OPEN
CENTRE. PORTS P
& T CLOSED WITH
PORT A CONNECTED
TO PORT B.



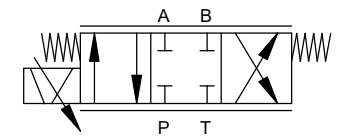
SOLENOID OPERATED PROPORTIONAL VALVE.
THE TWO LINES, ONE ABOVE AND THE
OTHER BELOW THE THREE ENVELOPES OF
THE SYMBOL, DENOTE THAT THE VALVE IS
INFINITELY VARIABLE, i.e. STEPLESS CONTROL.



SOLENOID OPERATED PROPORTIONAL VALVE.
THE SPOOL HAS AN OVERLAP CONFIGURATION.
i.e. PORTS P, T, A & B, ARE CLOSED IN THE
CENTRE OR NEUTRAL POSITION.



SOLENOID OPERATED PROPORTIONAL VALVE.
THE SPOOL HAS AN UNDER LAP
CONFIGURATION, i.e. PORTS P, T, A & B,
ARE OPEN IN THE CENTRE OR NEUTRAL
POSITION.



4/3 SERVO VALVE. (TYPICAL EXAMPLE)