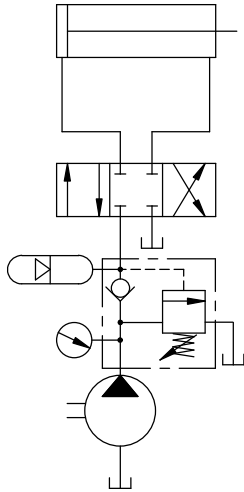
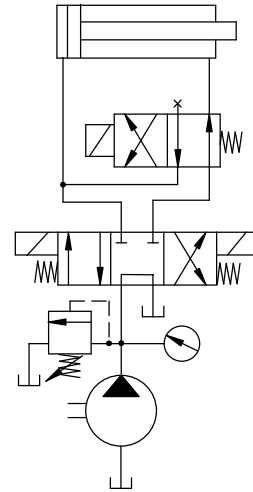
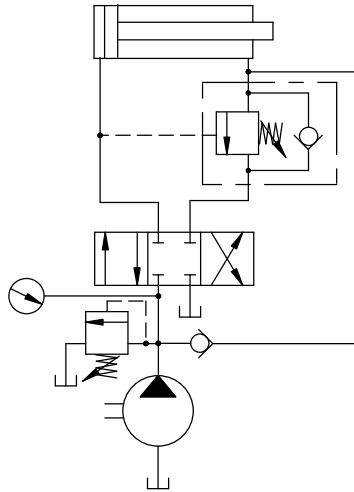


# CYLINDER SYSTEMS

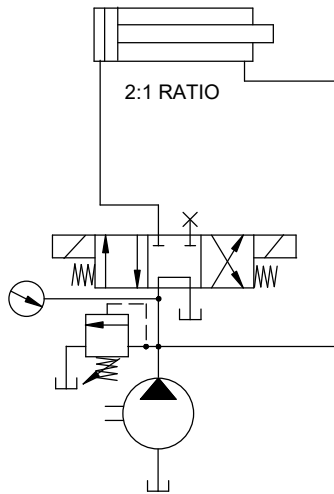
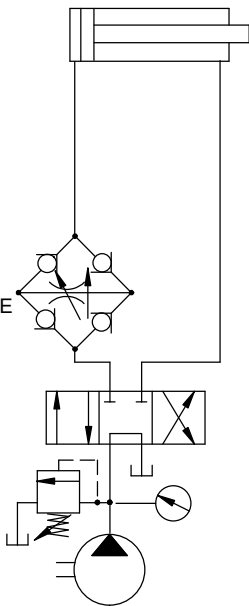
UNLOADING RELIEF VALVE



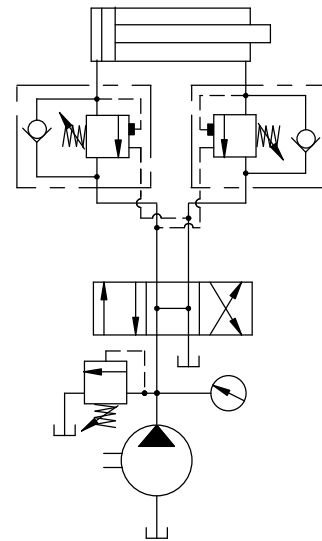
TWO REGENERATING SYSTEMS



GRAETZ BRIDGE



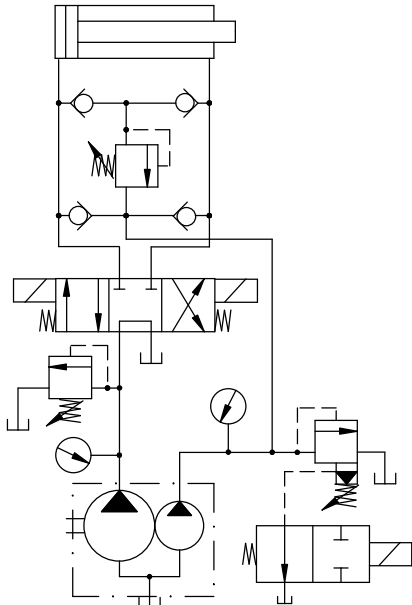
EXTENDING & RETRACTING  
WITH EQUAL SPEEDS,  
REGENERATING



OVERCENTRE VALVES

EXTENDING & RETRACTING  
WITH EQUAL SPEEDS  
CONTROLLED BY SINGLE  
PRESSURE COMPENSATED  
FLOW CONTROL VALVE

CYLINDER WILL HAVE EQUAL PRESSURES  
WHEN EXTENDING OR RETRACTING



CYLINDER MAY HAVE ONE FORCE EXTENDING  
AND A DIFFERENT FORCE WHEN RETRACTING

