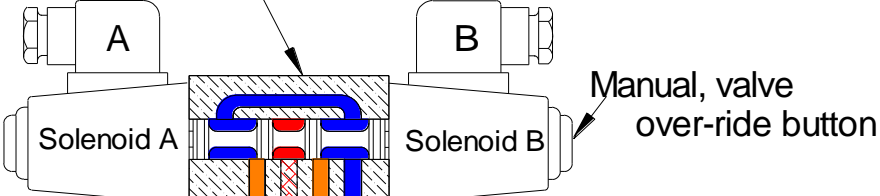


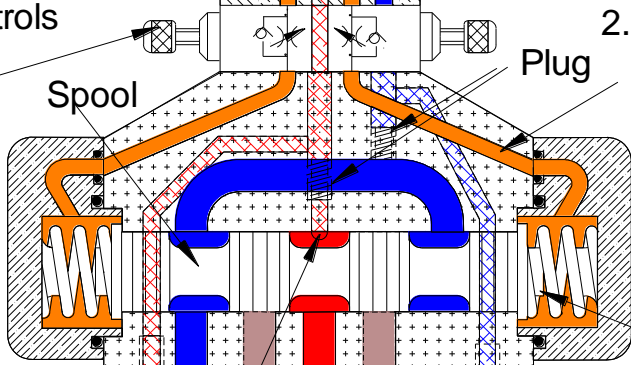
SOLENOID CONTROLLED PILOT OPERATED DIRECTIONAL CONTROL VALVE. EXTERNALLY PILOTED WITH THROTTLING PLATE

Solenoid controlled pilot operated directional valve
externally piloted externally drained

1. The solenoid valve when energised

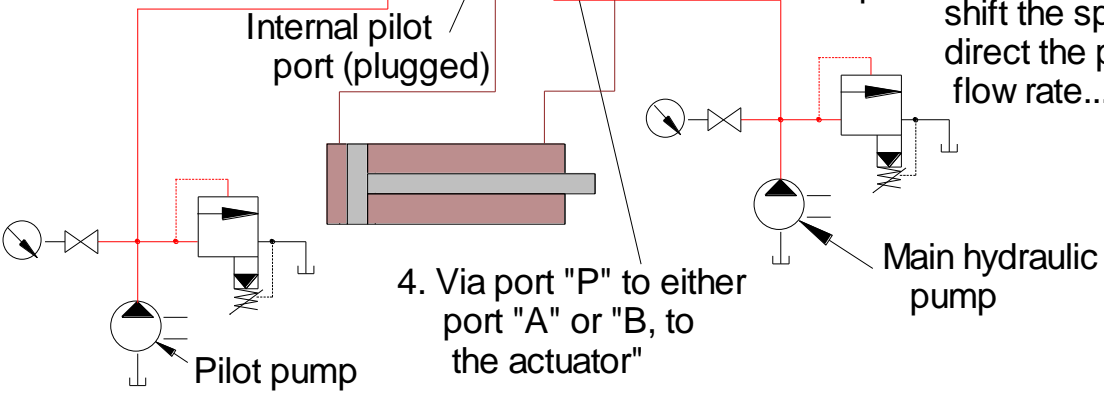


Throttle plate controls the shifting speed of the spool



2. Directs hydraulic fluid from the pilot pump via the solenoid controlled directional valve internal pilot lines....

3. Against end face of the main spool to shift the spool so as to direct the pump flow rate.....



4. Via port "P" to either port "A" or "B, to the actuator"

The Equivalent of:

NG 16 = CETOP 7. 300 l/min

NG 25 = CETOP 8. 700 l/min

NG 32 = CETOP 10. 1100 l/min